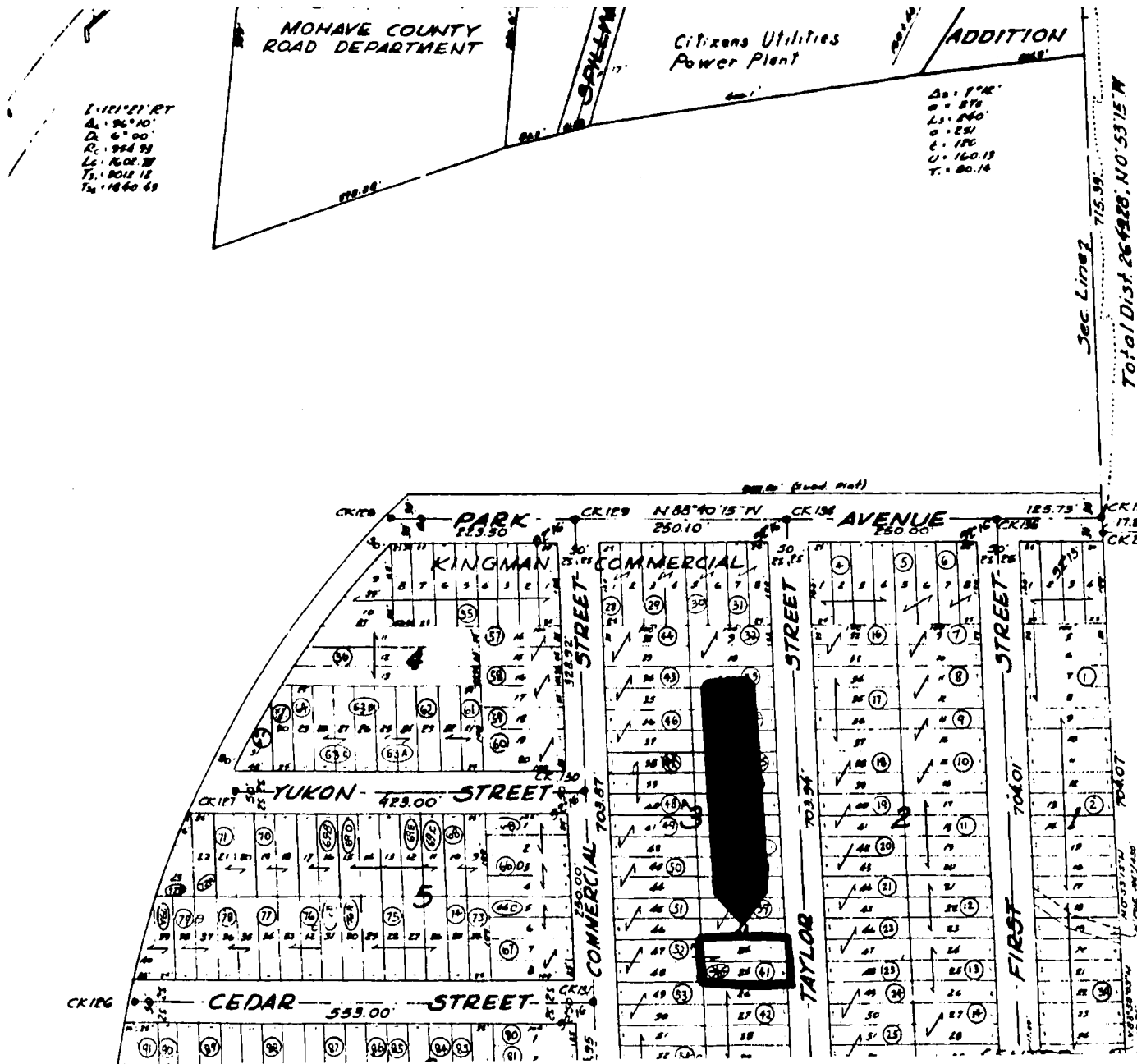


# SECTION 23SE-SE.



## KINGMAN COMME CENTER

Rec. JAN. 25, 1916

**APN#: 304-19-041**

This is a copy of a county map. The Seller and Auctioneer make no warranties regard: map accuracy, land use restrictions, legal or physical access, road improvements, or any lack thereof. Please inspect the property personally prior to bidding at the auction.