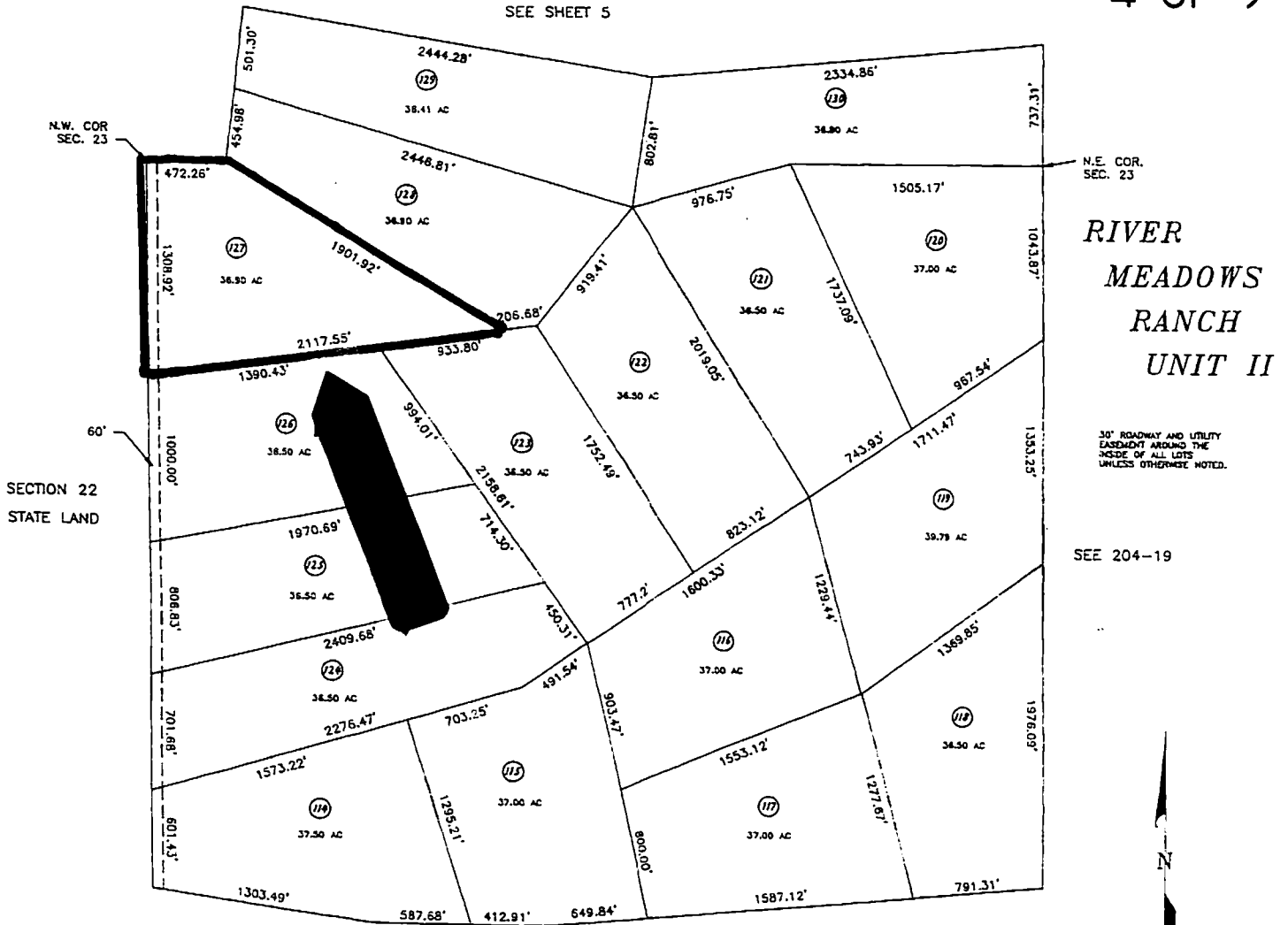


PART SEC. 14, 23 T15N R24E

204-56 57  
4 OF 9



2000 APACHE COUNTY ASSESSOR Anna M. Prentice

**APN#: 204-57-127**

This is a copy of a county map. The Seller and Auctioneer make no warranties regard: map accuracy, land use restrictions, legal or physical access, road improvements, or any lack thereof. Please inspect the property personally prior to bidding at the auction.