

No Acc't

SURVEY

11 10

DEDICATION:
 Herein it is hereby declared that the Chicago Title Company does hereby dedicate to the Public at large a right-of-way and easement for use as an access road for ingress and egress, at the Public Entrance (PE) defined herein, and included in the above described premises and as herein shown, which have been conveyed to the Public at large by the Chicago Title Company, an Arizona corporation on Trusts.

IN WITNESS WHEREOF the Chicago Title Company has hereunto caused its name to be signed and its corporate seal to be affixed and the same to be attested by the signatures of its duly authorized officers, as follows:

CHICAGO TITLE COMPANY,
 an Arizona corporation on Trusts.
 By: ROBERT L. TRIST VICE PRESIDENT

GILA & SALT RIVER MERIDIAN
 A Survey of Section 25, T.17N., R.16E., and Section 30, T.17N., R.17E., Gila and Salt River Basins and Meridian, in Navajo County, State of Arizona.

APPROVED:
 Approved by Navajo County Board of Supervisors on _____, 1970.

STATE OF ARIZONA
 County of Navajo

Being the true and correct copy of the original plat of the Survey of Section 25, T.17N., R.16E., and Section 30, T.17N., R.17E., Gila and Salt River Basins and Meridian, in Navajo County, Arizona, as approved and authorized by the Board of Supervisors of Navajo County, Arizona, on _____, 1970.

By: Richard L. Kelly County Clerk

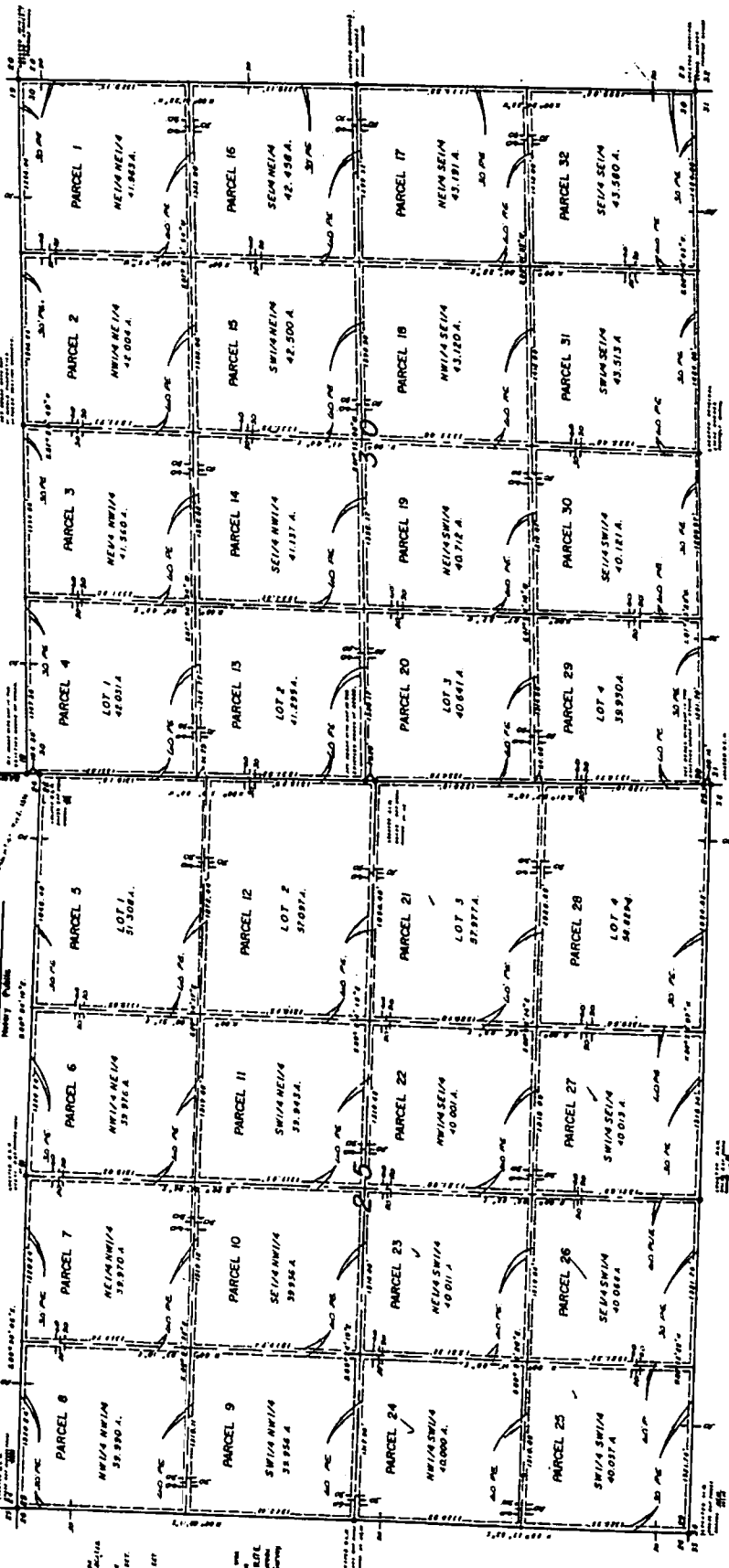
T. 17 N., R. 16 E.

ONE INCH = 400 FEET

SIGNED AND SEALED: May 14, 1970

Charles G. Galt
 Surveyor General
 State of Arizona

T. 17 N., R. 17 E.



LEGEND

- SECTION CORNER
- SECTION CORNER
- SECTION CORNER
- SECTION CORNER

NOTE:

The survey of bearings and distances was made in accordance with the provisions of the Arizona Surveying Act, as amended, and the rules and regulations of the State Board of Land Management, Surveying.

SURVEYED BY JUNE 27, 1970

No Accet

11 10

SURVEY

GILA & SALT RIVER MERIDIAN

A survey of Section 25, T.17N., R.16E., and Section 30, T.17N., R.17E., Gila and Salt River Base and Meridian, in Navajo County, State of Arizona.

DEDICATION:

Know all men by these presents that the Chicago Title Company does hereby dedicate to the Public at large a right-of-way and easement for use as an access road for ingress and egress, of the Public Easement (P.E.) plotted herein, and included in the above described premises and as herein above have been conveyed to the Public at large by the Chicago Title Company, an Arizona corporation as Trustee.

IN WITNESS WHEREOF the Chicago Title Company has hereunto caused its name to be signed and its corporate seal to be affixed and the same to be attested by the signature of Noble Lee, Trust Officer.

CHICAGO TITLE COMPANY,
an Arizona corporation as Trustee.
By: Noble Lee
TRUST OFFICER

STATE OF ARIZONA)
) SS
County of Maricopa)

Before me this 25th day of April, 1970, personally appeared Noble Lee, who acknowledged himself to be the Trust Officer of CHICAGO TITLE COMPANY, an Arizona corporation, and that he as such officer, being authorized so to do, executed the foregoing instrument for the purpose therein contained by signing the name of the corporation as Trustee, and in no other capacity, by himself as such officer.

Michael R. Lee
Notary Public

APPROVAL:
Approved by Navajo County Board of Supervisors
this _____ day of _____, 1970.

By _____
Chairman

THIS SURVEY IS A DIVISION OF LAND INTO PARCELS GREATER THAN 36 ACRES IN ACCORDANCE WITH ARIZONA REVISED STATUTES 32-201, DEFINITION NO. 11.

THIS MAP CORRECTLY REPRESENTS A SURVEY MADE BY ME OR UNDER MY DIRECTION IN CONFORMANCE WITH THE REQUIREMENTS SET FORTH IN THE "MANUAL OF INSTRUCTIONS FOR THE SURVEY OF THE PUBLIC LAND OF THE UNITED STATES," EDITION OF 1947, UNITED STATES DEPARTMENT OF THE INTERIOR, BUREAU OF LAND MANAGEMENT.

SHOWED AND SEALED Aug 14, 1970



Lawrence J. Williams
Registered Professional Surveyor, No. 12345, State of Arizona

T. 17N., R. 17E.

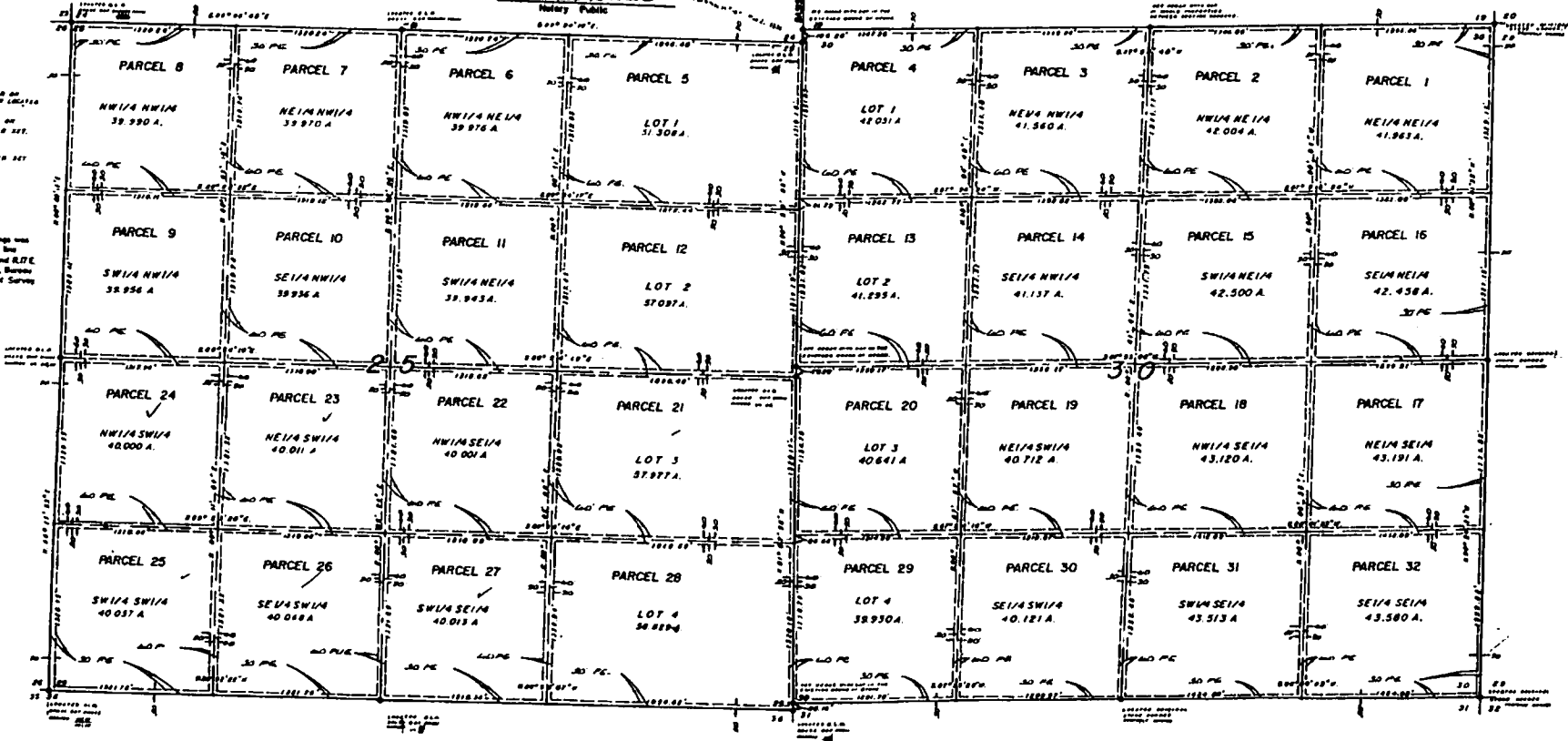
ONE INCH = 400 FEET

T. 17N., R. 16E.

LEGEND

- SETTING CORNER OR BENCHMARK LOCATED
- SETTING CORNER OR BENCHMARK CHANGED SET.
- CLEARLY CORNER SET

NOTE:
The basis of bearings was established from the base corner to R.16E. and R.17E. as shown on the U.S. Bureau of Land Management Survey.



SURVEYED IN JUNE 1970